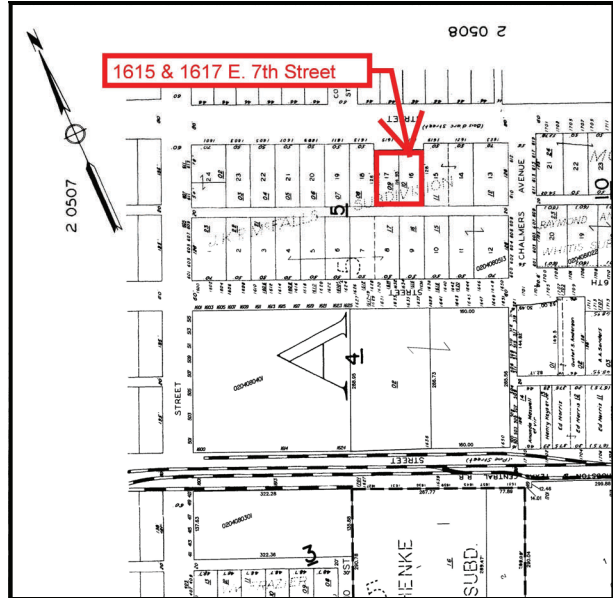


# 2 Commercial Lots

1615 & 1617 E. 7th Street



Two commercial lots fronting East 7th Street and within the Plaza Saltillo TOD. The current station area plan shows a mixed use concept with similar uses on the ground floor as the base CS zoning with development bonuses offered eliminating maximum f.a.r. and granting a compatibility waiver for an affordable housing component.

<p><b>ROAD FRONTAGE:</b> Approximately 100 Feet on East 7th Street</p> <p><b>DEPTH:</b> Approximately 115 Feet</p> <p><b>ZONING:</b> CS-CO-MU-NP</p> <p><b>IMPROVEMENTS:</b> None</p>	<p><b>TOD:</b> Plaza Saltillo TOD</p> <p><b>PRICE:</b> \$690,000</p>
---------------------------------------------------------------------------------------------------------------------------------------------------------------------------------------	----------------------------------------------------------------------

## CONTACT

Jamie Knight  
 Knight Real Estate Corporation  
 307 E. 2nd Street  
 Austin, Texas 78701  
 Ph (512) 472-1800 x 3  
 Fax (512) 472-1999  
 Email: jamesknight@knightrealestate.com



The information contained herein is from sources deemed reliable by Knight Real Estate but is not guaranteed. All offerings are subject to errors, omissions, prior sale, change, or withdrawal without notice. In accordance with rules promulgated by the Texas Real Estate Commission, you are hereby notified you should obtain information disclosing broker representation. Knight Real Estate represents the seller of this property. Before entering into any legally binding agreement, you should consult an attor-