



Questions? Click here for help and contact information.

Disclaimer

The information on this website has been produced by the City of Austin as a working staff map and is not warranted for any other use. No warranty is made by the City regarding its accuracy and completeness.

For official verification of the zoning of a property, please order a Zoning Verification Letter at **512-978-4000**.

Location: 650 CANION ST
(3,121,518.16, 10,095,205.59)

Grid: K28

Future Land Use (FLUM): Transportation
Specific Regulating District
Lamar/Justin TOD

Regulating Plan:

Zoning: TOD-NP

Zoning Case: C14-04-0012
C14-2008-0030
NPA-2008-0018.01

Zoning Ordinance (Mostly after 2000): 20081211-086
040513-33B
99-0225-70(b)

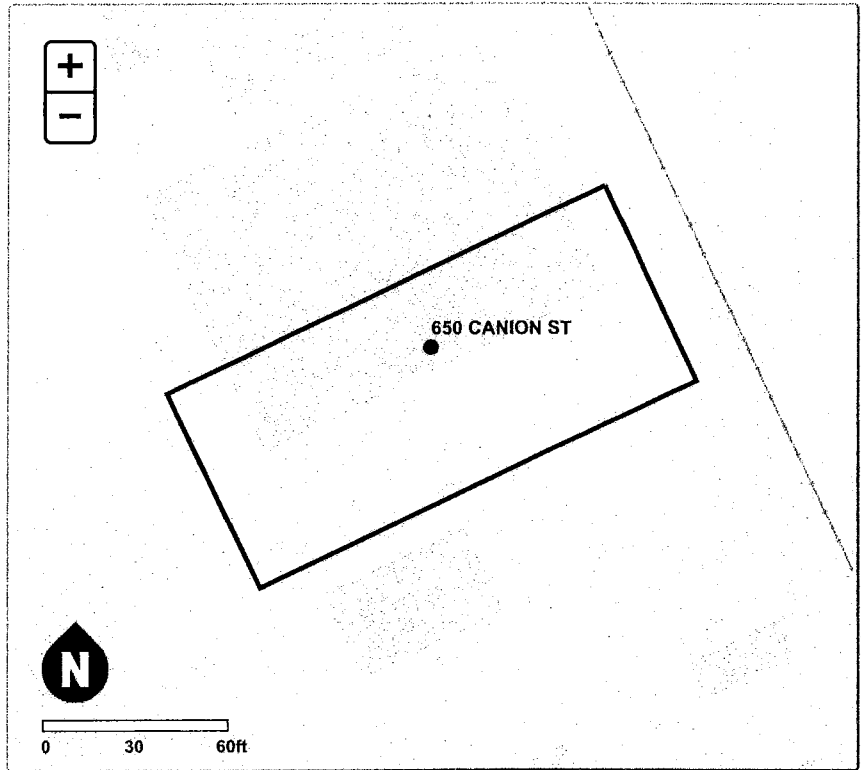
Zoning Overlays: NEIGHBORHOOD PLANNING AREA

- HIGHLAND
- Brentwood/Highland Combined NPA

RESIDENTIAL DESIGN STANDARDS

TRANSIT ORIENTED DEVELOPMENT

- LAMAR BLVD
- NEIGHBORHOOD CENTER
- APPROVED STATION AREA PLAN



Zoning Guide

The Guide to Zoning provides a quick explanation of the above Zoning codes, however, the Development Assistance Center provides general zoning assistance and can advise you on the type of development allowed on a property. General information on the Neighborhood Planning Areas is available from Neighborhood Planning. Visit Zoning for the description of each Base Zoning District.