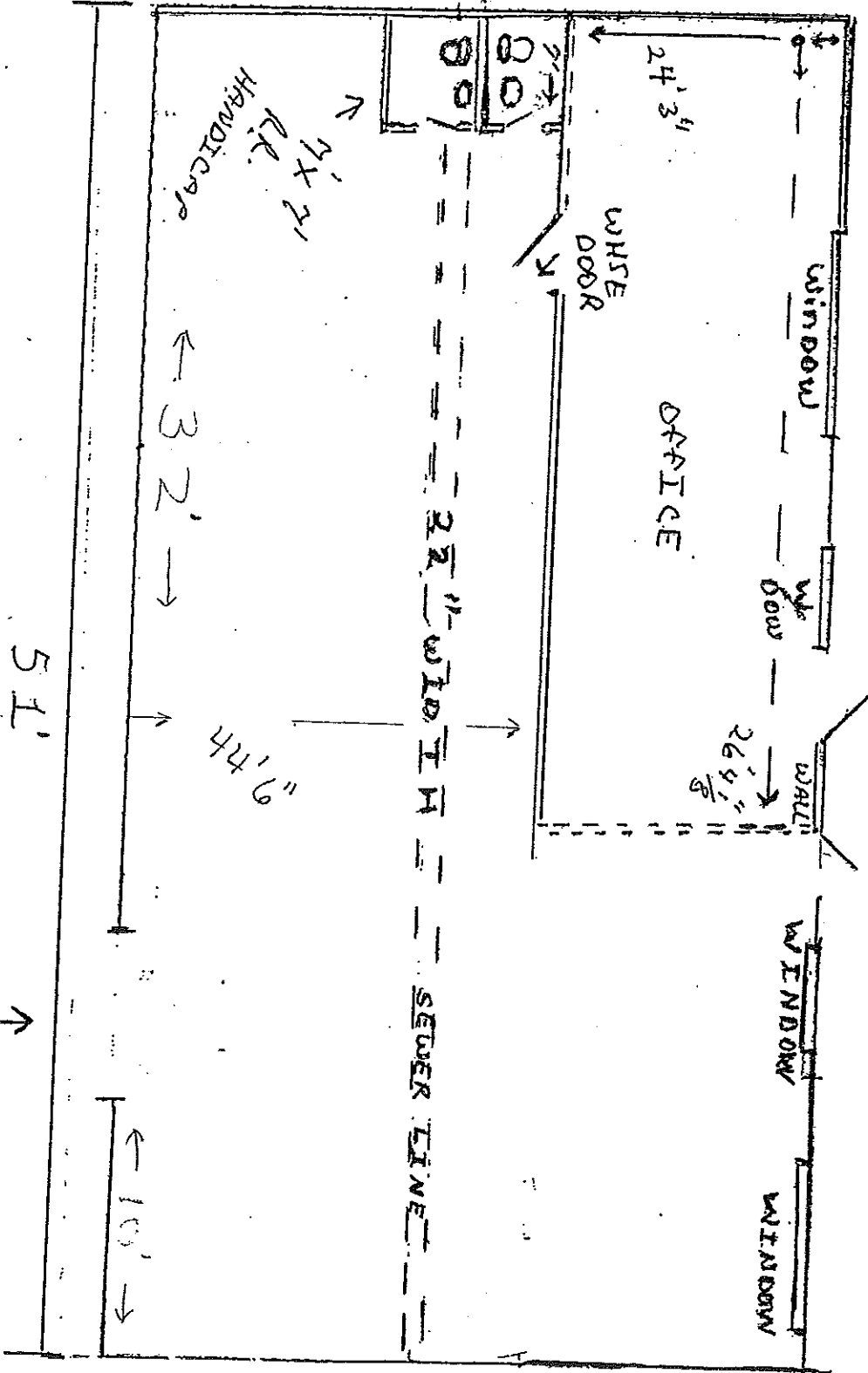


2x6 WALL DIVIDES REST ROOMS
7'x6' RP



WALL TO WALL 24'6"

69' WIDTH WHE

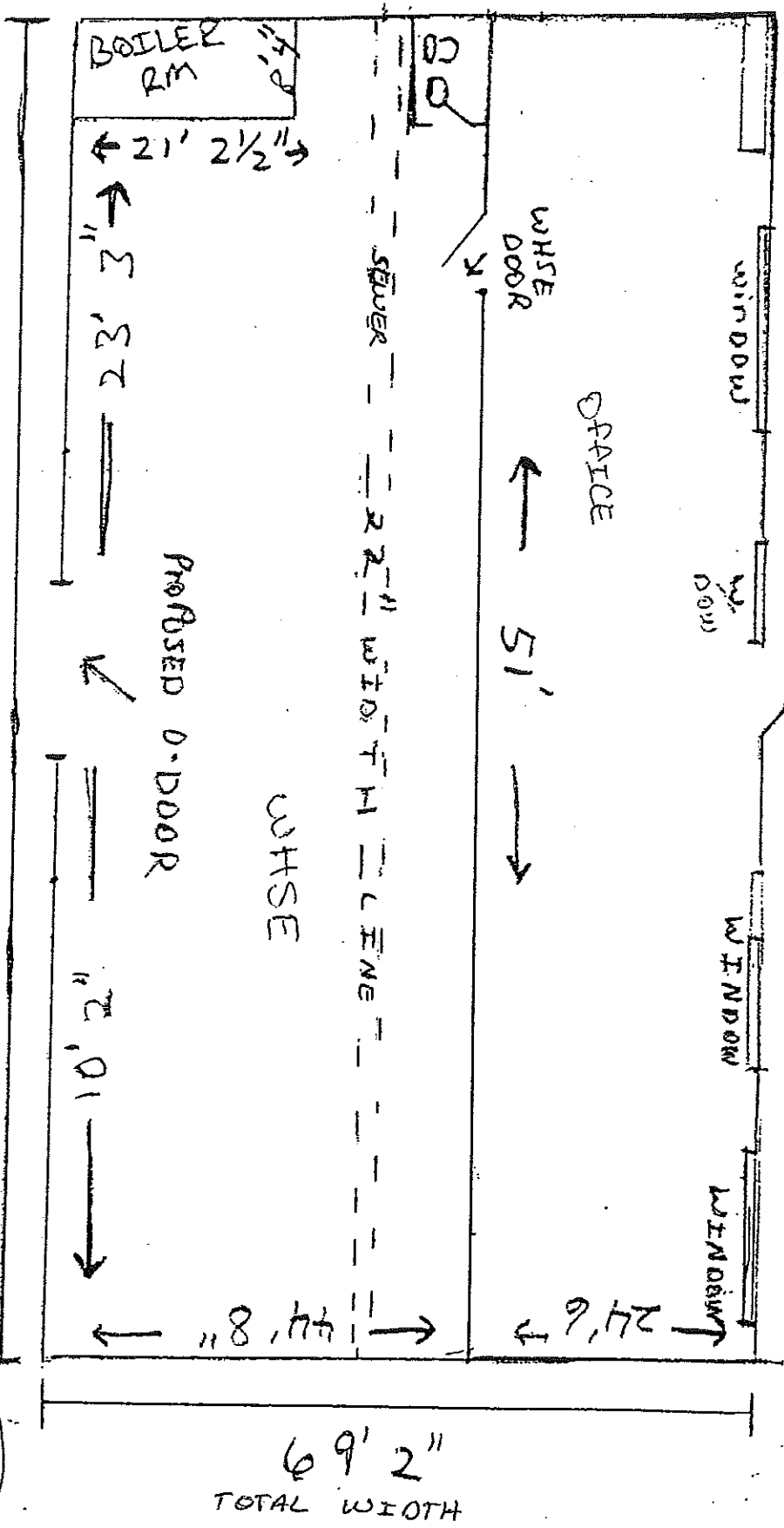
51' WAREHOUSE Length

o-head DOOR

3519

Office 624

1515 DUNBAM
SUITE 200-C



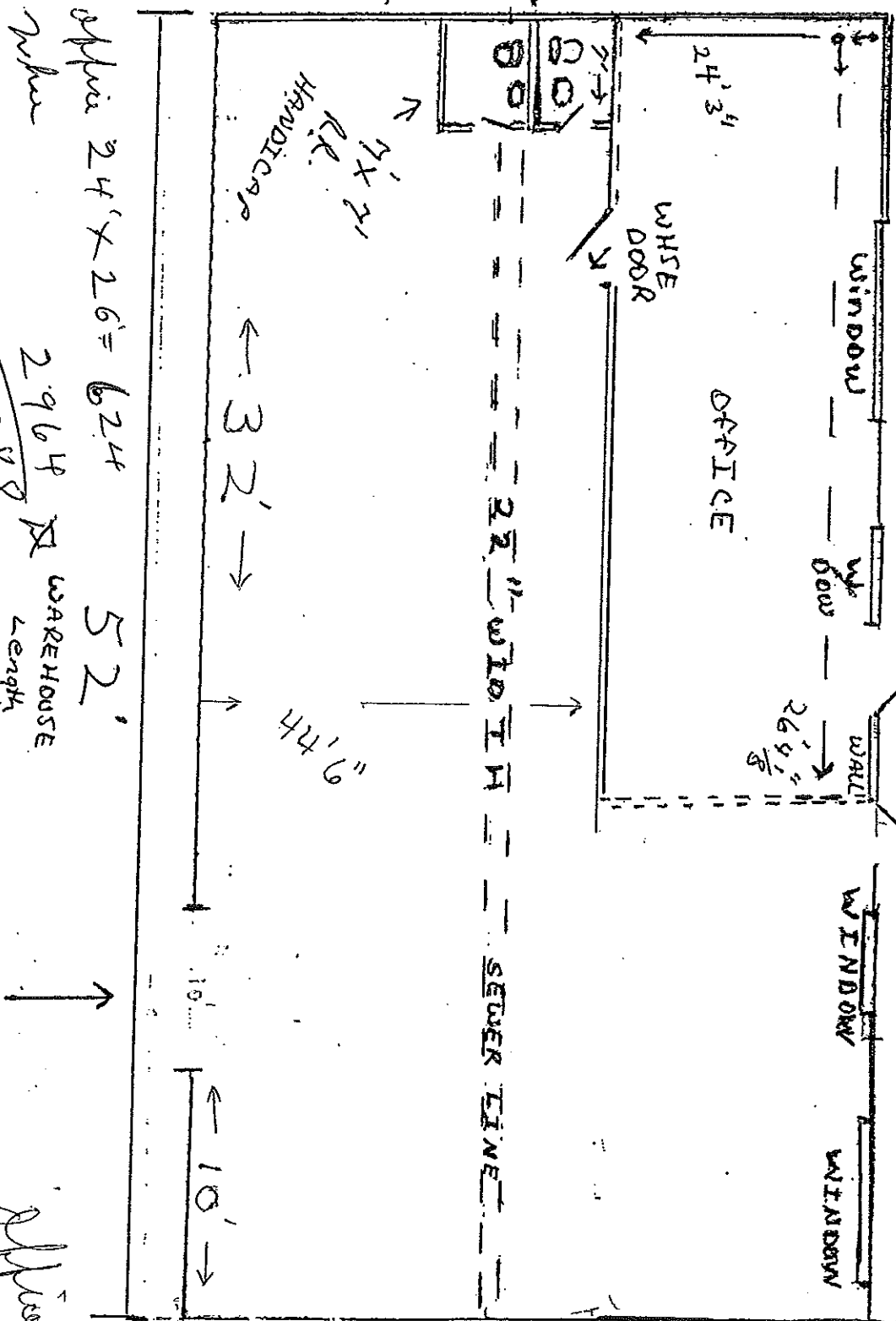
SUITE 200-A

3588
~~3519~~
~~Office 1200~~

(DRAWN) 1515 DUNBARD 1/11

2x6 WALL DIVIDES REST ROOMS

7'x6'



Office 24' x 26' = 624
 Area

Warehouse length

$$\begin{array}{r} 2964 \\ 3588 \end{array}$$

O-HEAD DOOR

69' WIDTH WHSE

WALL TO WALL 25' 2"

1515 DUNGAN
 SUITE 200-B

3588 #

Office 624

SCALE 1/8" = 1'-0"

207

(K)

206

(J)

204 METER

(H)

204 METER

(G)

CONC. DOCK 10x18

203

(F)

METER

2

FPHB?

D.S.

WP

SEE F

10' x 12' OHD DR

10' x 10' OHD DOOR

3' 7"

10' x 7' OHD DR

10' x 9' OHD DR

TMS COMPUTER AUSTIN CUSTOM CARPETING

SUITE # 208 (206) (PERMITTED) 1700 S.F.

SUITE # 207 (204) 3,500 S.F.

3'-0" DROP

3'-0" DROP

156'-0" (TO END OF BUILDING)

73'-0"

209

208

207

206

205