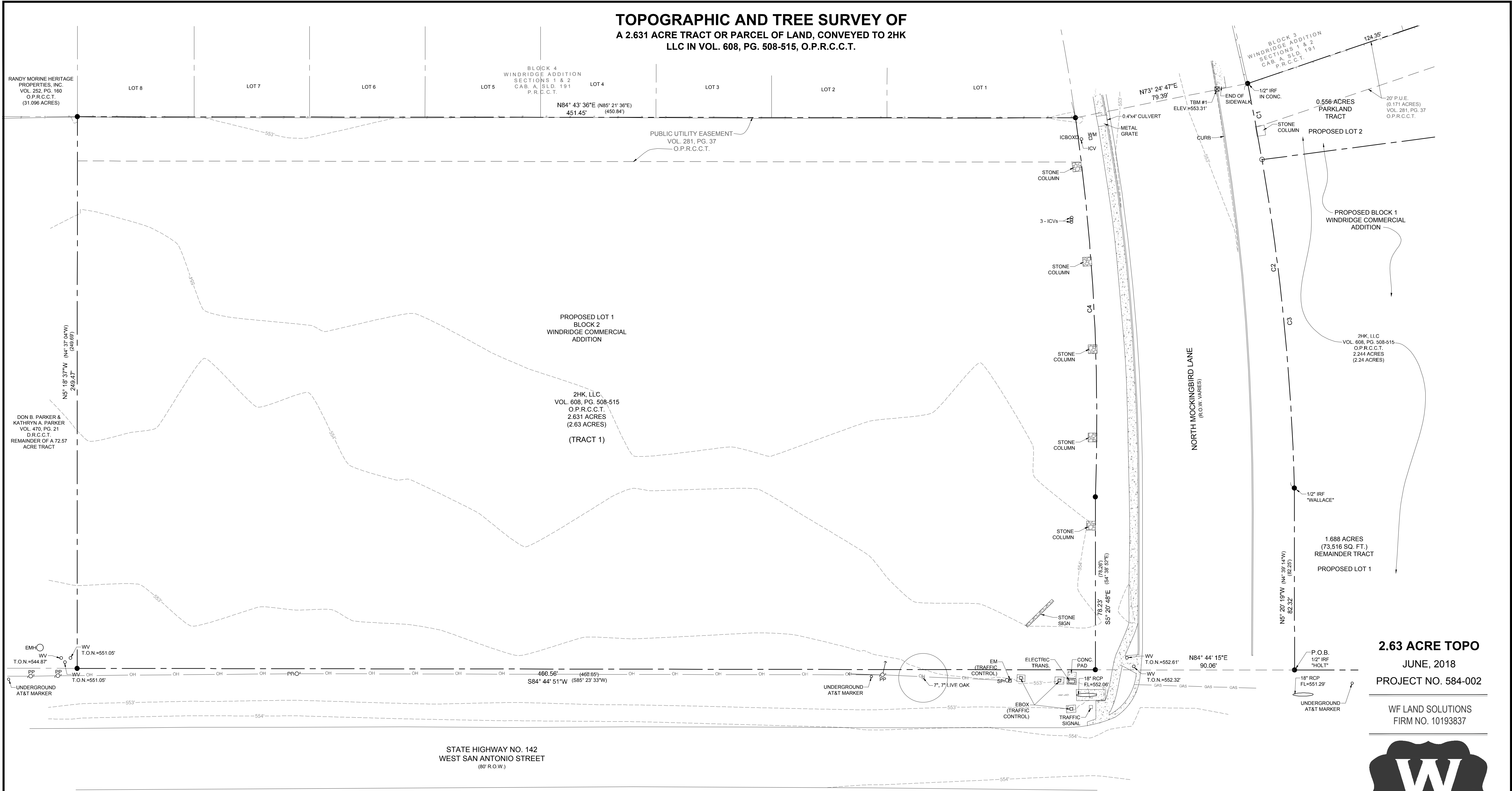


**TOPOGRAPHIC AND TREE SURVEY OF
A 2.631 ACRE TRACT OR PARCEL OF LAND, CONVEYED TO 2HK
LLC IN VOL. 608, PG. 508-515, O.P.R.C.C.T.**



2.63 ACRE TOPO
JUNE, 2018
PROJECT NO. 584-002

WF LAND SOLUTIONS
FIRM NO. 10193837



ENGINEERING & DESIGN
FIRM # F-15324
2007 S 1ST STREET, SUITE 103
AUSTIN, TEXAS 78704
(512)394-1900

SHEET
1 OF 1

LEGEND

● 1/2" IRON ROD FOUND	WVO WATER VALVE
○ CAPPED 1/2" IRON ROD SET STAMPED "P FLUGEL 5096"	ICBOXD IRRIGATION CONTROL BOX
PP○ POWER POLE	ICVO IRRIGATION CONTROL VALVE
SP○ SERVICE POLE	— WOOD FENCE
EMH○ ELECTRIC MANHOLE	T.O.N. TOP OF NUT
EMD ELECTRIC METER	P.O.B. POINT OF BEGINNING
EBOXD ELECTRIC BOX	R.O.W. RIGHT-OF-WAY
— OH OVERHEAD UTILITY LINE	P.R.C.C.T. PLAT RECORDS, CALDWELL COUNTY, TEXAS
WMD WATER METER	O.P.R.C.C.T. OFFICIAL PUBLIC RECORDS, CALDWELL COUNTY, TEXAS

UTILITY AND IMPROVEMENT NOTE:
ONLY SURFACE EVIDENCE OF UTILITIES AND IMPROVEMENTS ARE SHOWN ON THIS SURVEY.

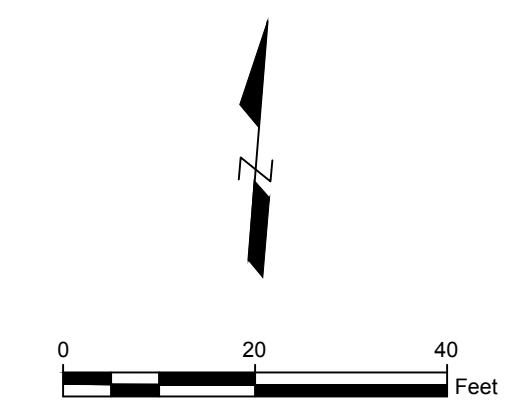
HORIZONTAL DATUM:
TEXAS STATE PLANE COORDINATES
NAD 83 (CENTRAL ZONE 4203)

VERTICAL DATUM:
NAVD '88 ELEVATION DATUM

ON-SITE BENCHMARK:
TBM #1 - CUT SQUARE IN CONCRETE CURB NEAR THE SOUTH END OF A SIDEWALK ON THE EAST SIDE OF NORTH MOCKINGBIRD LANE APPROXIMATELY 14' FROM THE NORTHWEST CORNER OF THE 2.244 ACRE TRACT. ELEV.=553.31'

CURVE TABLE

CURVE #	LENGTH	RADIUS	CHORD
C1	35.00'	1045.00'	N16° 02' 17"W 35.00'
C2	184.40'	1045.00'	N11° 56' 32"W 184.16' (184.44') (1045.00') (N11° 15' 20"W 184.20')
C3	149.40'	1045.00'	N10° 58' 58"W 149.27'
C4	171.88'	963.31'	S8° 20' 11"E 171.65' (172.19') (963.31') (S7° 52' 25"E 171.96')



AS SURVEYED BY:
Paul J. Flugel



PAUL J. FLUGEL
RPLS NO. 5096
FIRM NO. 10193837

DATE OF FIELD SURVEY:
6-21-2018
DATE OF PLAT:
6-29-2018